

4th Annual Manchester Touch Championships



Saturday 23rd February 2013

Men's, Women's and social mixed

Be part of the biggest club touch event in Europe

Prizes in ALL categories

only
£150
per team



fullychargedevents@hotmail.co.uk

call Gregg 07825 940836

fullychargedevents.co.uk



Brief Overview

Here are all the details you need for the forthcoming comp.

Venue	William Hulme's Grammar School, Spring Bridge Road, Manchester M16 8PR.
Date	Saturday 23rd February 2013 – 9:30 meet, 10:00 1 st games.
Entry Fee	£150
Contact	fullychargedevents@hotmail.co.uk Gregg (07825 940 836) Jules (07795 805 801)
Closing date for payment	Friday 1st February 2013
Payment	All teams must pay the full registration fee by Bank Transfer - no cash or cheques. Please see below for bank account details. Once payment has been received and confirmed, full event details will be sent out.
Food	Is included within your tournament entry fee: Food at after-tournament social.
Accommodation	See below for a list of some hotels in the area
Social	Everyone knows that Touch is as much about the social side as it is the playing side, so we have arranged for food and the England v France game to be shown at The Woodstock Pub , 139 Barlow Moor Road, M20 2DY, Following this the evening social will take place at Walkabout , 13 Quay Street Manchester M3 3HN, 20.30 onwards.

Bank transfer **with a reference of your team name** to be sent to the following account:

Bank Details: Halifax

Sort Code: 110581

Account #: 00571786

Closing date for payment 1st Feb 2013

n.b. No refunds are possible

If you need any further info (after reading all of the below) please email: fullychargedevents@hotmail.co.uk

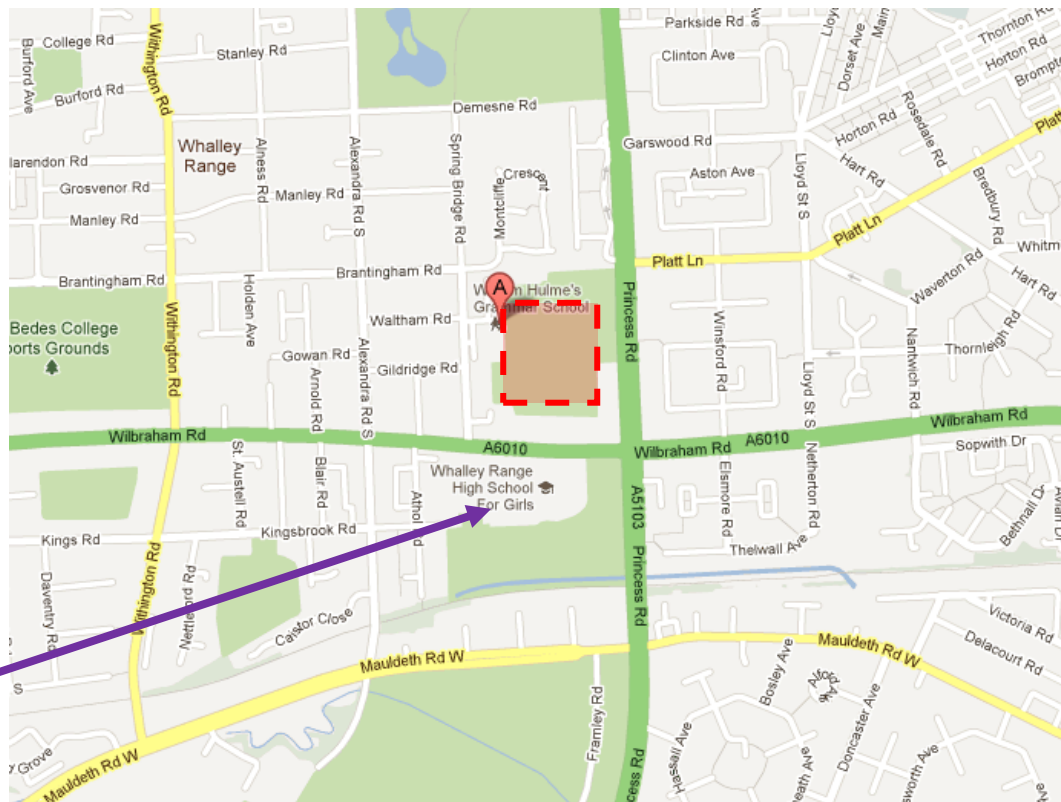
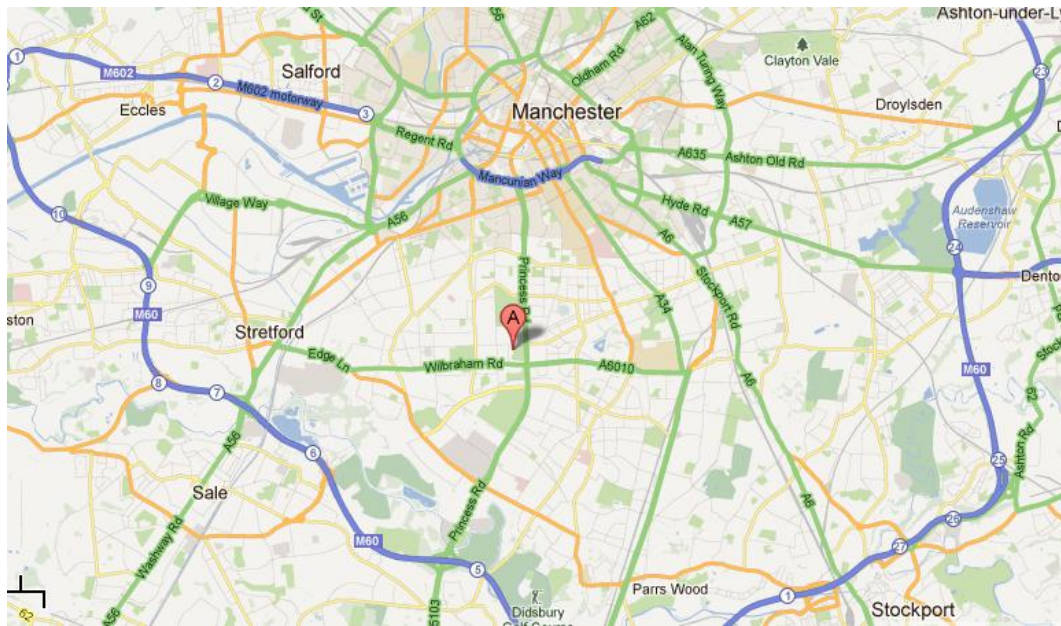
1 WELCOME

Manchester welcomes you and your team to the 4th Annual Invitational Touch Competition. This year's event will be held at: William Hulme's Grammar School, Spring Bridge Road, Manchester M16 8PR.

1.1 MAP

WILLIAM HULME'S GRAMMAR SCHOOL, SPRING BRIDGE ROAD, MANCHESTER, M16 8PR

(Please note it's **NOT** Whalley Range High School)



NOT THIS SCHOOL!



1.2 TRANSPORT

1.2.1 By Car - From the South

From the M6 take the A556 at J19 then onto M56 signposted to Manchester Airport.

Go to the end of the motorway and continue straight on to the A5103 dual carriageway - on for about 2 miles and you will see some playing fields on the left - keep on straight to the next set of lights (where Princess Parkway meets Wilbraham Road) and turn left. **Go past** Whalley Range High School for Girls situated on the left and take the first right onto Spring Bridge Road. The venue is about 100 metres down on the right.

1.2.2 By Car - From the North

M62 - M61 - M60

Junction 7 (Carrington, Altrincham, Sale)

Keep left and join A56 onto Chester Road signposted Manchester City Centre/Manchester United Football Ground. Keep in the middle or right hand lane and follow the road round the island roundabout. Carry straight on until you reach the traffic lights near the Stretford Arndale Centre. Turn right onto Edge Lane A5145, towards Chorlton. At the second main set of traffic lights bear left with the road onto Wilbraham Road A6010. Travel along the A6010 for about 3 miles. Pass through Chorlton Town Centre, past Morrisons, Petrol Station and further ahead Hindu Temple) - on the left. After the Temple, go through the next lights and then 3rd turning on the left is Spring Bridge Road we are about 100 metres down on the right.

1.2.3 PUBLIC TRANSPORT

1.2.3.1 TAXI

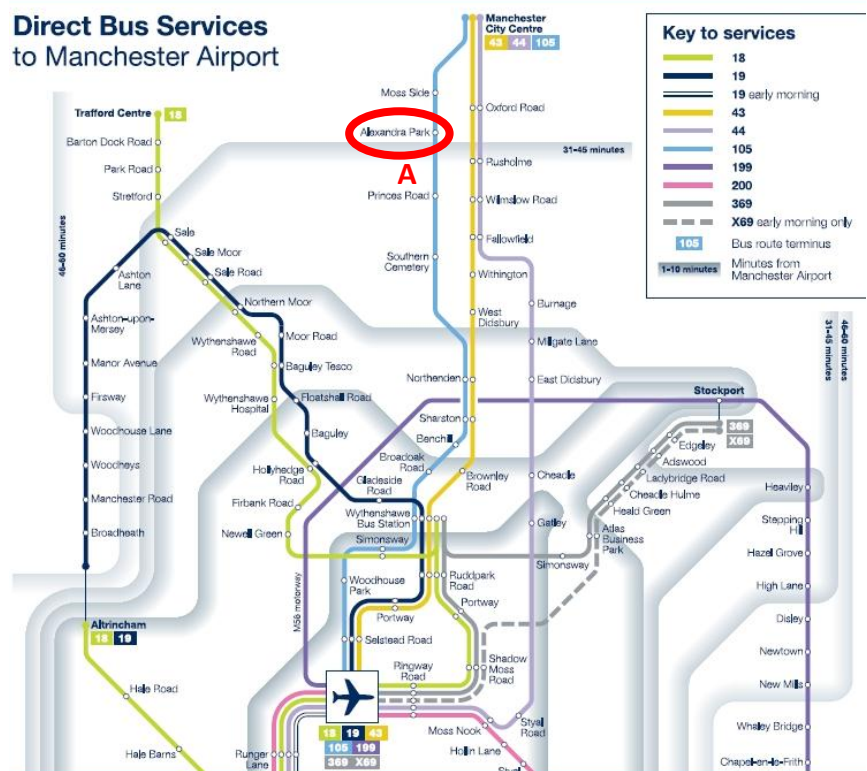
The airport is 9 miles south of the city centre so if a few of you are arriving together then a taxi to the city centre / tournie venue would probably work out cheapest. Black cabs are available outside each arrivals terminal or a journey can be booked and paid for inside each arrivals terminal at the 'Arrow Cars' desk.

1.2.3.2 BUS

Bus number 105 goes from the airport to the city centre and passes the tournie venue (light blue line). The Alexandra Park bus stop is just a few hundred yards beyond our venue (marked A), see Map >

1.2.3.3 TRAIN

Trains run every 10 mins from the airport into Manchester Piccadilly (city centre). The journey takes 20 mins.



1.3 CONTACT DETAILS

Contact numbers, should you need to contact us either before, or on the day are Gregg 07825 940836 or Jules 07795 805801 (or email: fullychargedevents@hotmail.co.uk)

1.4 ACCOMMODATION

Use the venue or pub postcode to search for nearby hotels, any that are south of the city centre are within easy reach of the grounds and also many of the cheaper airport hotels are also just a short taxi journey away. Some ideas below:

- Britannia Country House Hotel, Palatine Road, Didsbury, Manchester, M20 2WG
- Premier inn, West Didsbury, Christie Fields Business Park, Derwent Avenue, Manchester, M21 7QS
- Etap Hotel, Manchester Salford Quays, 19 Trafford Road, Salford, M5 3AW

1.5 REFRESHMENTS

Food will be served in The Woodstock pub at the completion of the tournament whilst watching the England v France 6 nations game.

1.6 REFEREES

We have a full complement of full time referees who will be officiating the games. However, each team will be required to provide a player-referee on the day. Their names and details should be provided to us prior to the competition so that we can schedule the games appropriately. These hopefully won't be required.

1.7 KIT

It is the responsibility of each team to provide their own kit for the tournament.

Please make sure that the kit you use has easily visible numbers on them to help make life easier for the referees. *Please remember that metal or screw-in studs are illegal in Touch.*

1.8 DISCLAIMER

All teams must hand in a completed disclaimer form and team list prior to their first game. These will be emailed out, and hard copies will also be available on the day.

2 Team Entries

Teams: The tournament is split into Men's, Women's and Mixed playing divisions.

	Men's Division	Women's Division	Mixed Division
1	Loughborough	West Wildcats	Cardiff Raptors
2	Midland Tigers	Midland Tigers	Lincolnshire Poachers
3	Midland Panthers	North West Blades	North East Raiders
4	North West Blades	South East Sharks	Sandymount Touch
5	South East Sharks	South East Taipans	Swiss Barbarians
6	South East Taipans		Thames Valley Vikings
7	South Samurais		Touch Ecosse
8	West Wildcats		Chargers Creations



3 PITCH MAP



4 TIMETABLE

We'll issue a full times listing and schedule once all teams have paid/confirmed. But we expect it to be something like this.

- 09:00 – Arrival
- 09.30 – Registration & Captains Briefing at control tent
- 09:45 – Referees Briefing
- 10:00 – Games begin
- 15:50 – Games end (Followed by presentation in the pub)
- 17:00 – Six nations games being shown in [The Woodstock Pub](#), 139 Barlow Moor Road, M20 2DY
– Food available (free with tournament entry, servings at 16.00 and 17.00)
- 20:30 – After Tournament Social ([Walkabout](#), 13 Quay Street Manchester, M3 3HN)

If you have any questions on the day then there will be people at hand at the information tent. You will also be able to find out the latest results and league tables from there.

5 TOURNAMENT RULES

5.1 REGISTRATION

Each team must register all their players by midnight on Thursday 21st February, further info on this to follow. This will enable us to print each team sheet to assist in your disclaimer signing in the morning. This is becoming more common in large tournaments and so we hope this will allow you and your coaching/management team some indication of what admin is involved.

5.2 TEAMS

Standard FIT rules apply to the Mens, Womens and Mixed categories. In the Mixed competition each team is to field at least **3 female** players and **1 male** player on the pitch at ALL times. (unless in a drop-off situation)

5.3 LEAGUES

The competing teams will be divided into 3 leagues as shown previously.

All pool matches are 18 minutes long with no haltime break.

Knockout and Finals will be 2 x 10 minute halves, with a 2 minute half time.

The following number of Match points will be awarded for each league match:

Win	4 point(s)
Draw	2 point(s)
Loss	1 point(s)
Forfeit	0 point(s)

At the completion of the league, the teams with the most points will be the winner of their respective league. If at the completion two or more teams are level on match points, then the following criteria shall be used in the following order until one of the teams can be determined as the higher ranked:

- The team which has the best difference between points scored for and points scored against in all its pool matches shall be the higher ranked;
- The team which has 'most points for' shall be the higher ranked;
- The winner of the match in which the two tied teams have played each other shall be the higher ranked;
- Drop off game between the two tied teams. 'Golden Touchdown'. Coin toss to decide tap off.

The Men's and Mixed tournaments are split into 2 x 4 team pools, following completion of the pool games the teams will then progress into the relevant knock out semi-final. The winners of each semi final will compete in the relevant Final. Prizes are 'Cup Winners' and 'Bowl Winners' in both competitions.

Due to late team drop outs the Women's competition is a 5-team round robin in the 'pool' stage. The first and second placed teams will then progress straight to a 'Cup Final' with the victor being the 'Cup Winner', the 3rd and 4th place teams into a 'Bowl Final' with the victor being the 'Bowl Winner'. The 5th place team will drop out. Please see the playing schedule for further information.

6 MEDICAL SUPPORT

As part of our commitment to quality and making the day a competitive but safe event, we have secured expert physiotherapy cover for the duration of the event. Cari Thorpe (ETA head of medical services) & Emma Knott (ETA lead physiotherapist), two expert musculoskeletal physiotherapists have agreed to help out. Cari and Emma are senior lecturers at the University of Manchester and Huddersfield respectively, where they train physiotherapists as well as working in private practice. Emma has arranged to bring her Huddersfield University physiotherapy students to the event who will be under her direct supervision.

Cover available on the day - The student physiotherapists will be allocated to each game and will each look after a team during the game. The purpose of this is two-fold, one to give the student some experience at a sporting venue and two to assist injured players should it occur. They will also be available to provide taping during the event as well as providing ice and other immediate pain relief should it be required. Please remember that they are students and as a consequence they are still learning, however they will be under the watchful eyes of Emma and Cari.

7 PRESENTATIONS

At the end of the tournament, there will be some time for you all to get showered and changed. We will then adjourn to the nearby Woodstock pub where food is available, along with the 6 Nations game England v



France and we'll also present the trophies. We will aim for this to begin as soon as possible as we are conscious that a number of you will have a long trip home (if you're not staying around to sample the Manchester Nightlife!?)

As mentioned before, we will be going out for a social night afterwards and we hope you will all join us after what will have been a great day of Touch.



8 AFTER TOURNAMENT SOCIAL

Everyone knows that Touch is as much about the social side as it is the playing, SO we have arranged for an afternoon / evening / late night social starting at [The Woodstock Pub](#), 139 Barlow Moor Road, M20 2DY, following this the evening social will take place at [Walkabout](#), 13 Quay Street Manchester M3 3HN, 20.30 onwards.



Each of the team captains will receive a discount 'boomerang card' AND a free bottle of bubbly on arrival at the venue! On entry, please let the door staff know that you're with the 'Fully Charged Party', to avoid any admission issues.

RULES – Please take ID with you. No shorts or flip flops allowed (not like it's warm enough anyway!)

9 And Finally

We look forward to meeting those of you that we haven't already, as well as welcoming those of you we already know.

We hope that the day will be a great success and that you will all enjoy yourselves.

If you have any problems or queries whatsoever then please don't hesitate to contact us at any time.

You can reach us in any of the following ways: Gregg (07825 940 836), Jules (07795 805 801)
fullychargedevents@hotmail.co.uk

For further information and updates, visit the following links



<http://www.facebook.com/FullyChargedEvents>



https://twitter.com/FullyCharged_UK



<http://www.facebook.com/events/191000014375411/>